

est 1979

Jeremy  
Leaf & Co.



Nether Street, North Finchley

£625,000

- Two Bathrooms ( One en suite)
- Private Garden
- Reception Room
- Current Rental income £1,900pcm
- Kitchen
- Three Bedrooms
- 0.5 m to Woodside Park Tube Station

863 High Road, London, N12 8PT  
020 8446 4295

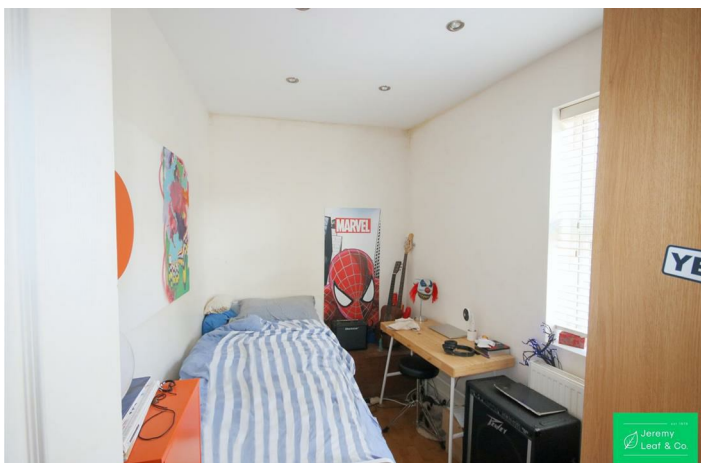
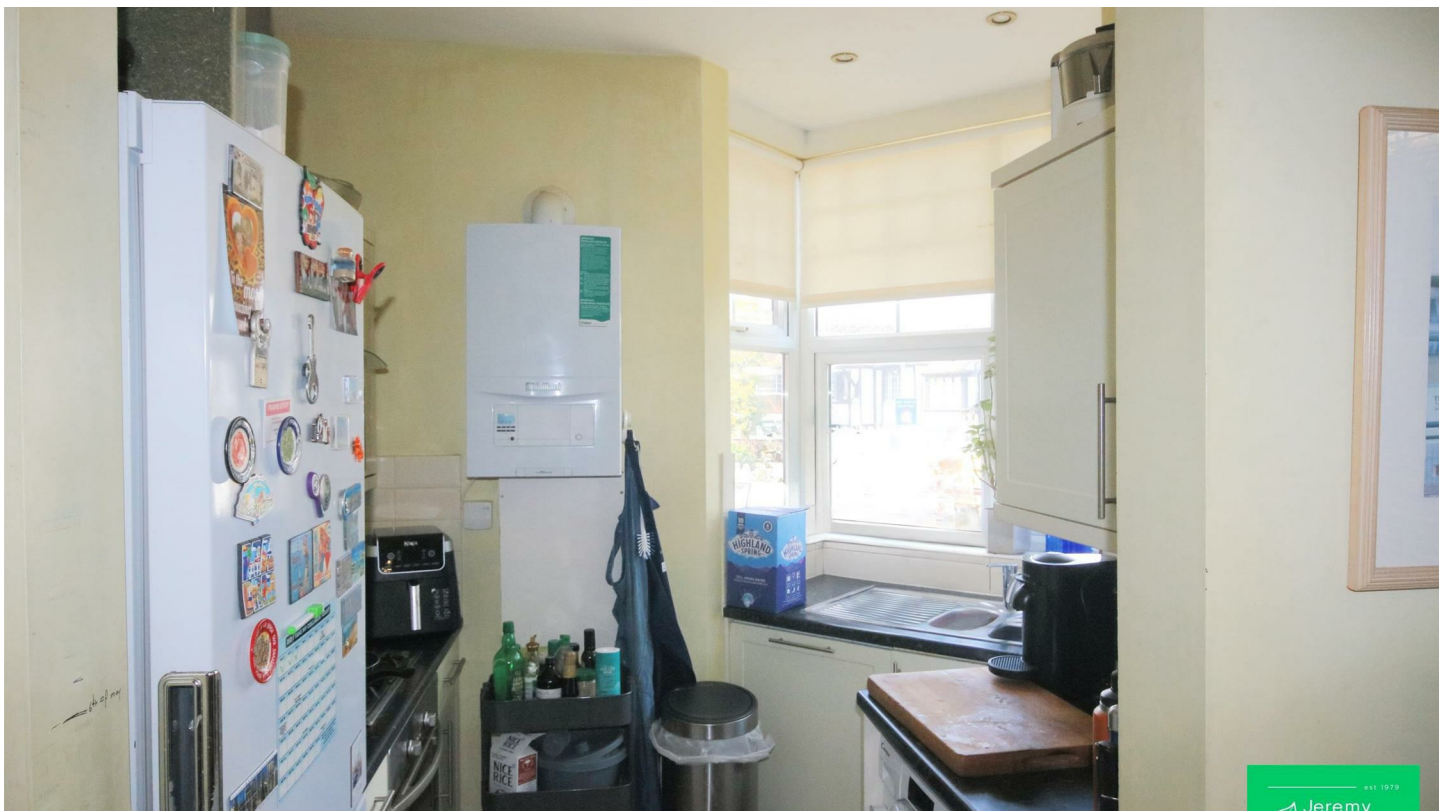
property@jeremyleaf.co.uk  
<https://www.jeremyleaf.co.uk/>

# Nether Street, North Finchley, N12 7NP

A three bedroom, two bathroom (one en-suite) ground floor flat with own private garden. Located 0.5 miles from Woodside Park (Northern Line) Station, this property would make a good first time buy or rental investment. New leases will be granted with the share of the freehold and service charges will be based on size. For a virtual tour click on the link provided.

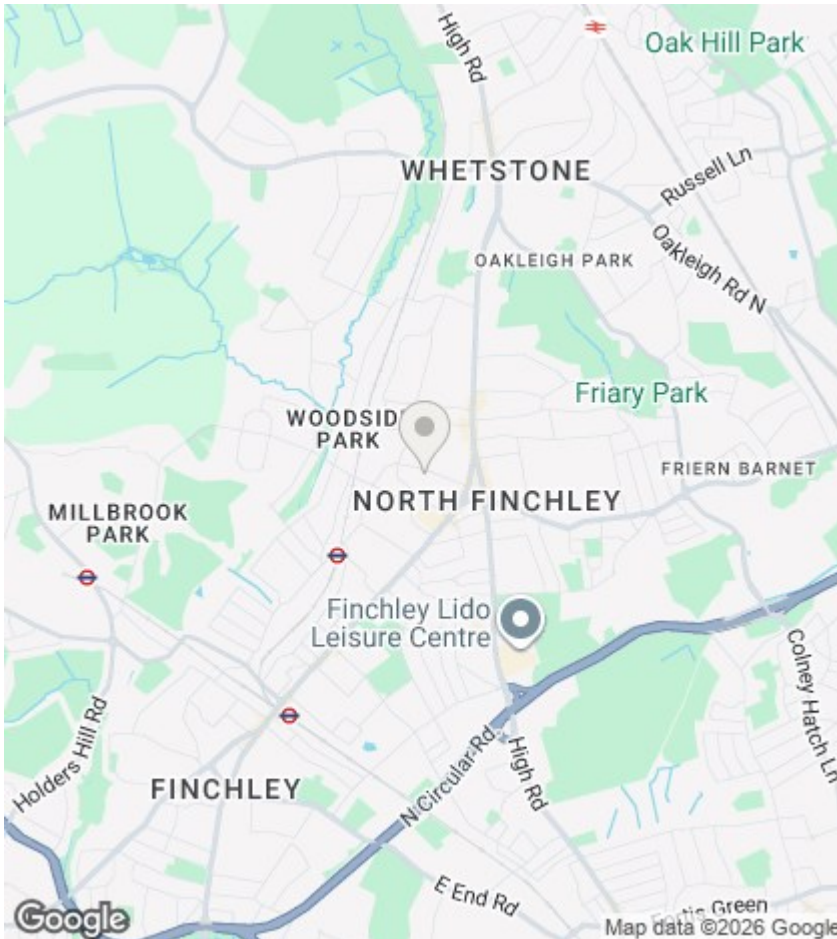


Council Tax Band: D









## Directions

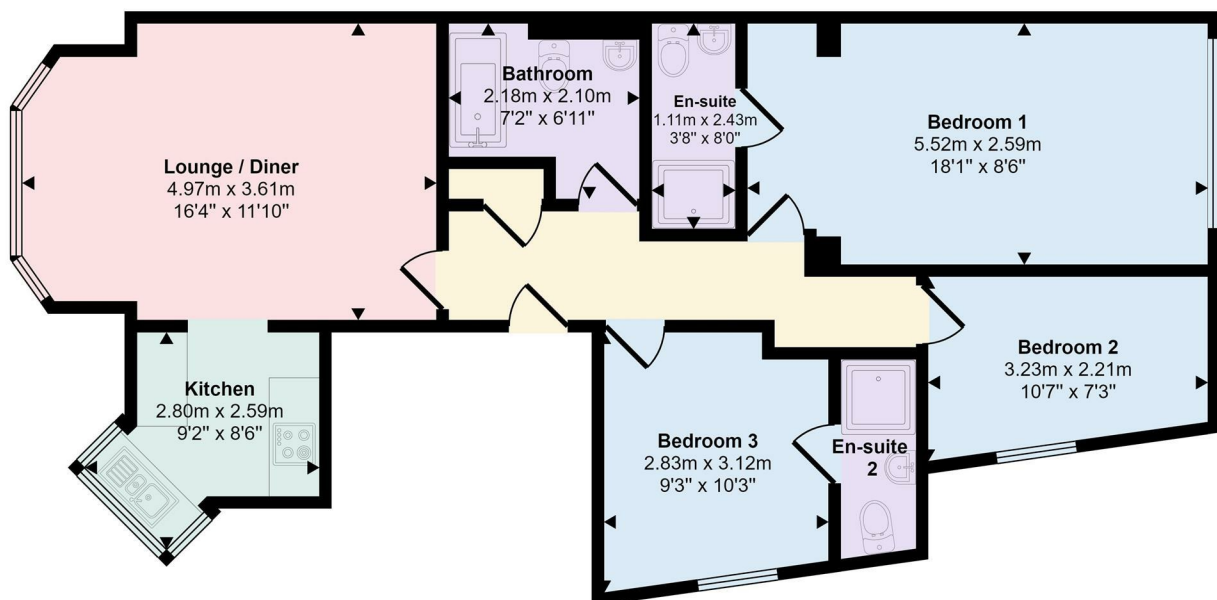
## Viewings

Viewings by arrangement only. Call 020 8446 4295 to make an appointment.

## EPC Rating:

Energy Efficiency Rating		
	Current	Potential
Very energy efficient - lower running costs		
(92 plus) <b>A</b>		
(81-91) <b>B</b>		
(69-80) <b>C</b>		
(55-68) <b>D</b>		
(39-54) <b>E</b>		
(21-38) <b>F</b>		
(1-20) <b>G</b>		
Not energy efficient - higher running costs		
<b>England &amp; Wales</b>	EU Directive 2002/91/EC	

Approx Gross Internal Area  
69 sq m / 742 sq ft



## Floorplan

This floorplan is only for illustrative purposes and is not to scale. Measurements of rooms, doors, windows, and any items are approximate and no responsibility is taken for any error, omission or mis-statement. Icons of items such as bathroom suites are representations only and may not look like the real items. Made with Made Snappy 360.